

Motorised WARD

Motorised Zoom Profile for Theatres, Concert Halls, TV Studios



The Magic of the Rings...

ADB
Lighting Technologies

The Silence of the Rings...

Superior optical Performance

Exceptional light output, for example 3,900 lux measured at 10 m with 12° field angle and an 800W halogen lamp. The automated and the manual **WARD** spotlights feature identical photometric characteristics, thus allowing homogenous lighting whenever both versions coexist in a rig, and perfect colour matching when colour changers are used. In addition the user has the choice between two zoom ranges, 12°-30° and 22°-50°.

Remote Control via DMX512 or Ethernet

WARD/M is controlled via DMX512 or Ethernet (ArtNet) protocol, and is ACN and RDM ready. Data and 24V DC output provided on XLR4 for scroller or other DMX device.

No Fans = No Noise

No fans is the first condition for a truly silent operation. **WARD/M** has no fans. This, added to the use of low noise motors, teflon coating of several critical parts and high precision mechanics, makes of **WARD/M** the most silent automated light ever built.



The Secrets of the Rings...

Shapes

360° endless rotation capability of gobos and each individual shutter blade, allowing the creation of shapes which are impossible with any other profile.

Precision

Unequaled precision for the control of each function thanks to a 16-bit resolution. For example, pan & tilt can be positioned and repositioned with an accuracy better than 0.1°, and shutter control precision is second to none for a motorised fixture.

No Reset

No need for long and noisy reset sequences, for example after a power OFF, as the result of **WARD/M** using absolute sensors for detecting its position.

All-in-one

All-in-one remote control of all spotlight functions, i.e. shutters, iris, gobos, zoom and focus. Therefore no need to swap specific motorisation modules depending on required functions.



The Intelligence of the Rings...

Setup via Internet Browser

Programming and editing can be performed via a standard PC with an ordinary Web browser. All features are formatted as Web pages, so no additional control software is required.

Feedback

WARD/M provides an overview of all parameters and features on its Web pages. WARD/M feedback includes positioning of pan and tilt, lamp status, error messages... and more.

Scanner

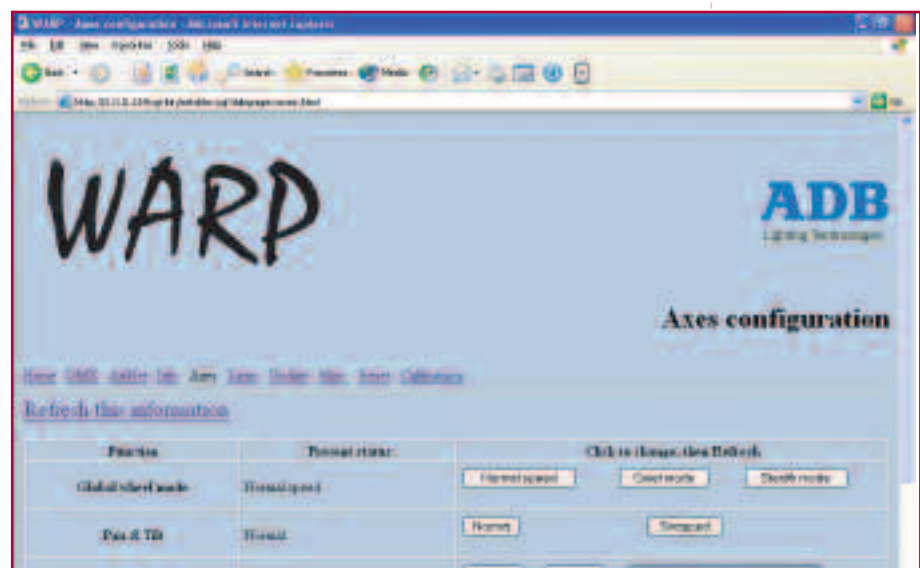
WARD/M Scanner software helps locating all the WARD/M units on the network. Scanner functions include uploading software and direct links to each WARD/M Web page. The Scanner provides also an overview of all WARD/M units, for example IP address, name and software version.

Ethernet Node

WARD/M provides the gateway for transferring DMX512 data from ArtNet/Ethernet. In fact each WARD/M includes an Ethernet Node. DMX allows daisy-chaining of multiple WARD/M units, so an installation can be a combination of Ethernet and DMX protocols.

Motorisation of Physical Limits

WARD/M has the capacity of learning and memorising its physical limits when hindered by any obstacle.



The Light of the Rings...

Photometric Data

WARD/M 12° - 30°				WARD/M 22° - 50°				
10	15	20	25	At min. angle				
2.6	3.9	5.3	6.6	Distance (m)	8	10	14	18
3900	1733	975	624	Field Ø (m)	3.5	4.4	6.2	8
				Illumination (lux)	2500	1600	816	494
5	8	11	14	At max. angle				
2.7	4.3	5.9	7.5	Distance (m)	3	5	7	9
3960	1547	818	505	Field Ø (m)	2.7	4.5	6.2	8.0
				Illumination (lux)	4388	1580	806	488

* Typical values measured at 230 V with a 800 W / 20,000 lm lamp

WARD motorised zoom profile 12° - 30°

WARD motorised zoom profile 22° - 50°

Option

Automatic voltage detection 90 - 264 VAC/50-60 Hz

Accessories

Set of 4 cardboard filter frames (185 x 185 mm)

Metal filter frame (185 x 185 mm)

Safety grid (185 x 185 mm)

Double gobo holder rotating (type B)

IN/OUT double gobo holder non rotating (type B)

Combined iris diaphragm & gobo holder rotating (type B)

Single gobo holder non rotating for WARD (type B)

Flight case for WARD/M

Hook clamp for WARD/M (2 required)

1.2 m spotlight safety cable

Colour changer for WARD

supplied with :

- 1 16-colour gel filter roll
- 1 adapter plate (APL-CC/WARP)
- 1 DMX/supply cable

Adapter plate for colour changer

Lamps

G9.5 axial, biplane filament, halogen lamp 230V-800W-3200K-300h

G9.5 axial, biplane filament, halogen lamp 230V-600W-3200K-300h

* Warning: "WARD halogen spotlights are exclusively designed for a biplane filament halogen lamp with a G9.5 base. Any modification to accommodate another lamp is not allowed and would void CE safety approval and product warranty"

Weight

WARD/M/12-30: 33 kg

WARD/M/22-50: 32.5 kg

Reference

WARD/M/12-30

WARD/M/22-50

PSU/UNI/WARP/M

PFC/185

PFM/185

GR/185

SP/2GO/WARP

SP/2GO/I-O/WARP

SP/OR-GO/WARP

SP-GO/WARP

FLY/WARP/M1

A40

CAS 120/N

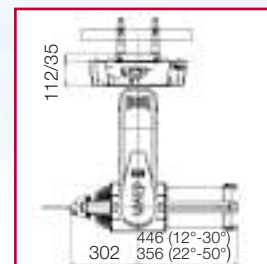
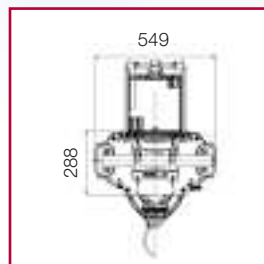
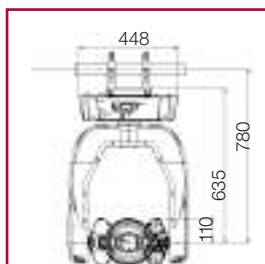
CC/WARP

APL-CC/WARP

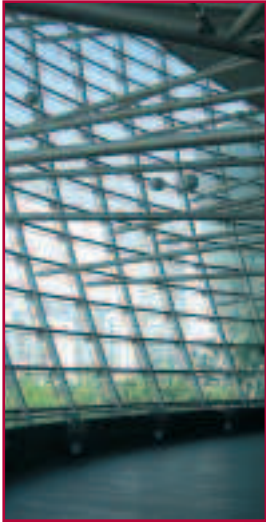
800W/G9.5/3200K

600W/G9.5/3200K

Dimensions (mm)



The Success of the Rings...



Shanghai, Oriental Arts Centre



Shanghai, The main concert hall, one of three ADB-equipped venues in the complex



UK, Glyndebourne Opera House

"I did a luminaire shootout with several leading brands including the **WARD/M** – and at the end of the day the **WARD/M** came up trumps. It is totally silent and is as bright, if not brighter than the competition. The fact that you can network them is fantastic, as is the way the **WARD/M** moves onto the controls on our consoles, and the way the shutters work is really user-friendly."

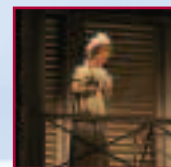
Keith Benson, Lighting Manager, Glyndebourne Opera House, UK

"The general principle of a motorised profile is that it can replace a number of fixed position profiles – but the Motorised **WARD**'s specific advantage for venues like this is that it can be used very effectively during live performances, even in a critical acoustic environment, because of its silent operation. Numerous qualities including low noise, light output, accuracy, repeatability of shutters and luminaire positioning and the Ethernet capabilities put it way ahead of the competition."

Bob Peill, LSi Projects, UK

"This award is presented every two years by the SHOWTECH organizers in conjunction with the German Association of Theatre Professionals (DTHG). It is intended to reward innovation, functionality and design, among other criteria. The Jury decision for the **WARD/M** was unanimous. Besides the silent operation and the very accurate repositioning, the highly elaborated remote control capabilities, in particular the Web based programming, were highly praised."

SHOWTECH Product Award 2005 (Lighting & Projection Technology category)



UK - 'Otello' at Glyndebourne, July 2005: Lighting Design by Mark Henderson

ADB - Your Partner for Light

Belgium N.V. ADB-TTV Technologies S.A.

(Group Headquarters) Leuvensesteenweg 585, B-1930 Zaventem
Tel : 32.2.709.32.11, Fax : 32.2.709.32.80, E-Mail : adb@adblighting.com

Deutschland ADB GmbH

Boschstrasse 3, D-61239 Ober-Mörlen
Tel : 49.6002.93.933.0, Fax : 49.6002.93.933.33, E-Mail : info@adblighting.de

France ADB S.A.S.

Sales Office: 168/170, boulevard Camélinat F-92240 Malakoff
Tel : 33.1.41.17.48.50, Fax : 33.1.42.53.54.76, E-Mail : adb.fr@adblighting.com

Factory & Group Logistics Centre: Zone industrielle Rouvroy F-02100 Saint-Quentin
Tel : 33.3.23.06.35.70, Fax : 33.3.23.67.66.56, E-Mail : adb.fr@adblighting.com

ADB
Lighting Technologies